



LiveStone  
CERAMIC



TIMBERLAND  
Carved in Excellence





## **FLOORS THAT WHISPER NATURE'S TALE: CHOOSE WOODEN TILES, WALK IN STYLE.**

Wooden tiles have become a popular choice in the world of interior design, offering a unique blend of natural aesthetics and practical functionality. These tiles are crafted to replicate the warmth and richness of real wood, providing a versatile and stylish flooring option for various spaces.

Available in a wide range of colors, sizes, and patterns, wooden tiles offer endless design possibilities. Whether you prefer a classic, rustic, or modern look, there's a wooden tile to suit your aesthetic preferences. The diversity in design allows for creative installations such as herringbone or chevron patterns, creating visually stunning floors.

Wooden tiles bring the timeless beauty of wood into homes and commercial spaces without the challenges associated with traditional hardwood flooring. They capture the essence of natural wood grains, knots, and textures, adding a touch of warmth and sophistication to any room.





**LiveStone**  
CERAMIC

**TIMBERLAND**  
Carved in Excellence



## TECHNICAL CHARACTERISTIC



## NATURAL AESTHETICS WITH MODERN CONVENIENCE

One of the key advantages of wood tiles in the 600x1200mm format is the perfect fusion of natural aesthetics and modern convenience. These tiles emulate the authentic look of wood while providing the durability and easy maintenance associated with ceramic or porcelain tiles. The larger size allows for more intricate wood grain patterns and textures, enhancing the realism of the tile and creating a stunning visual impact.



## FLOORS THAT SPEAK NATURE'S LANGUAGE



The tagline not only captures the essence of the visual appeal but also alludes to the innovation behind modern wood tile manufacturing. These floors seamlessly blend authenticity with innovation, offering the timeless look of hardwood with the durability and practicality of ceramic or porcelain. This harmonious fusion allows you to enjoy the natural aesthetics of wood without compromising on functionality.

The language of nature is diverse and ever-changing, and so are wood tiles. Whether laid in traditional patterns or used in innovative configurations, wood tiles become a medium for creative expression, allowing you to design a space that truly speaks to your unique style.





NAVIGATING IDEAS,  
ONE CLICK AT A TIME  
WELCOME TO THE INDEX

REGULAR  
WOOD

---



Alamo  
Natural



Artico  
Oak



Castelo  
Beige



Cypress  
Brown



Cypress  
Crema



Desirae  
Brown



Desirae  
Natural



Evron Mix  
Brown



Evron Mix  
Umber



Fronda Arce  
Beige



Fronda Arce  
Brown



Logger  
Brown



Logger  
Crema



Mangolia  
Beige



Mangolia  
Brown



Real Wood  
Brown



Real Wood  
Natural



Royal  
Oak



Sedan  
Oak



Worn  
Wood



START HERE,  
GO ANYWHERE:  
YOUR ADVENTURE  
BEGINS ON THE INDEX.

CARVING  
WOOD

---



Amazon  
Walnut



Arden  
Oak



Bass  
Wood



Dacota  
Beige



French  
Wood



Hickory  
Oak



Hobitet  
Crema



Hobitet  
Natural



Iroko  
Red



Larch Wood  
Beige



Larch Wood  
Brown



Larch Wood  
Gris



Navora



Oak Hardwood  
Beige



Oak Hardwood  
Brown



Oak Hardwood  
Natural



Pine Wood  
Brown



Pine Wood  
Crema



Rust  
Oak



Sonoma  
Oak





# ALAMO

## NATURAL

**TIMBERLAND**  
Carved in Excellence



 MATT SURFACE

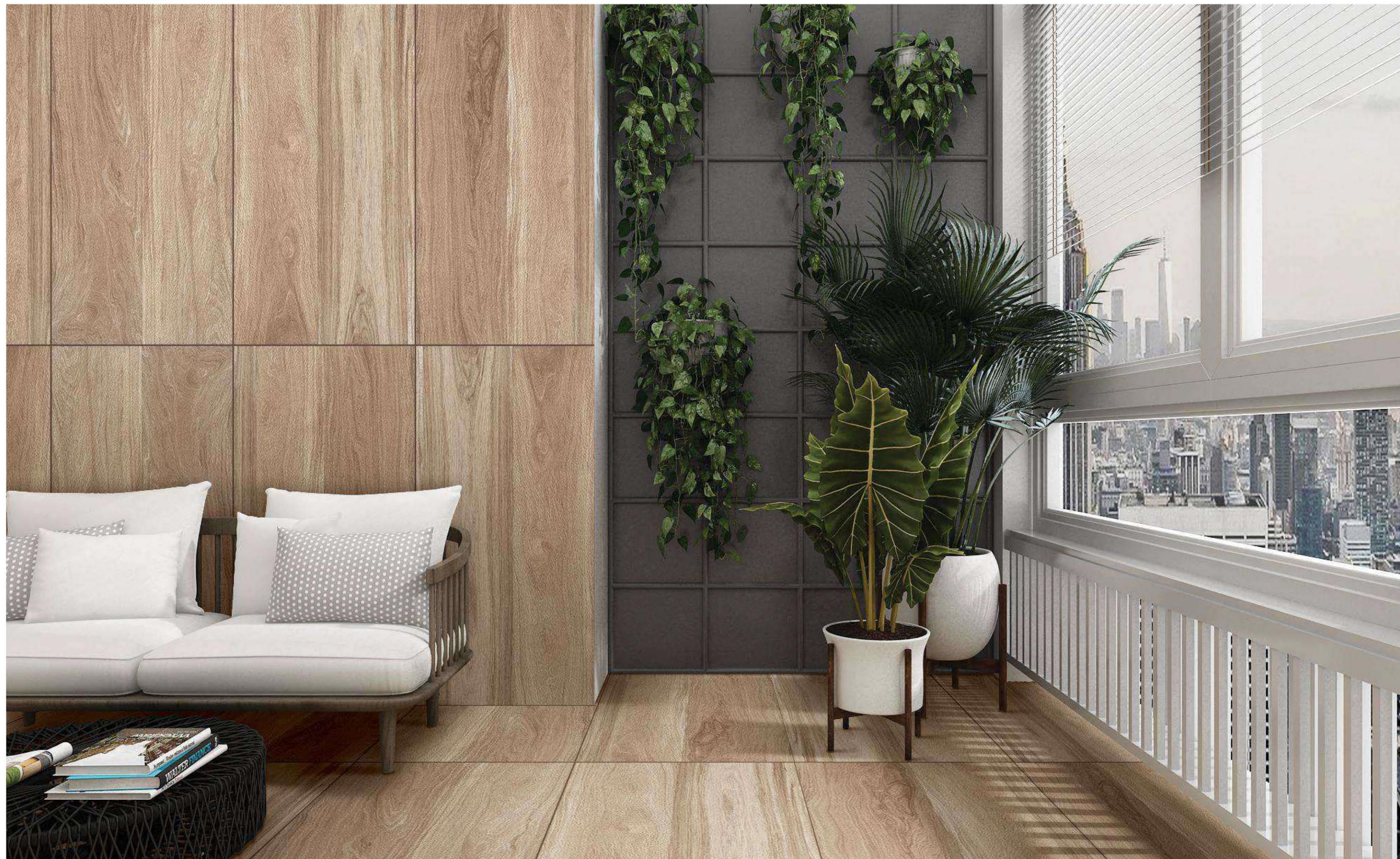
FORMATS  
600X1200MM  
60X120CM  
24"X48"  
2'X4'

COMPOSITION 4PCS 

TECHNICAL CHARACTERISTICS :







Wall : Alamo Natural  
Floor : Alamo Natural

**TIMBERLAND**  
Carved in Excellence

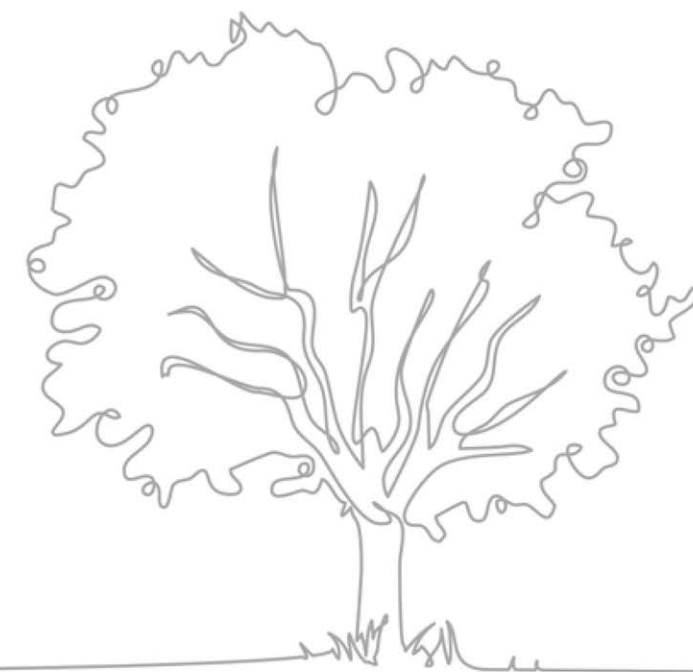




# ARTICO

## OAK

TIMBERLAND  
Carved in Excellence



MATT SURFACE

### FORMATS

600X1200MM  
60X120CM  
24"X48"  
2'X4'

COMPOSITION 4PCS



### TECHNICAL CHARACTERISTICS :







# CASTELO

## BEIGE

**TIMBERLAND**  
Carved in Excellence



 MATT SURFACE

FORMATS  
600X1200MM  
60X120CM  
24"X48"  
2'X4'

COMPOSITION 4PCS 

TECHNICAL CHARACTERISTICS :



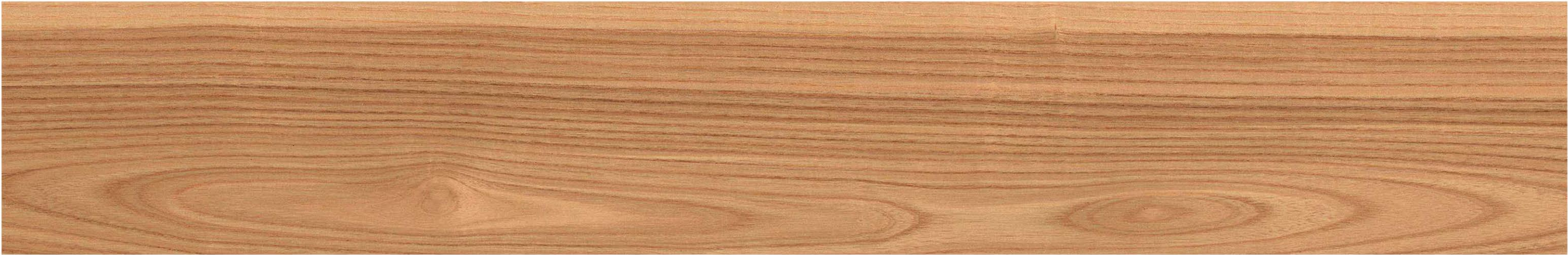




Wall : Castelo Beige  
Floor : Castelo Beige

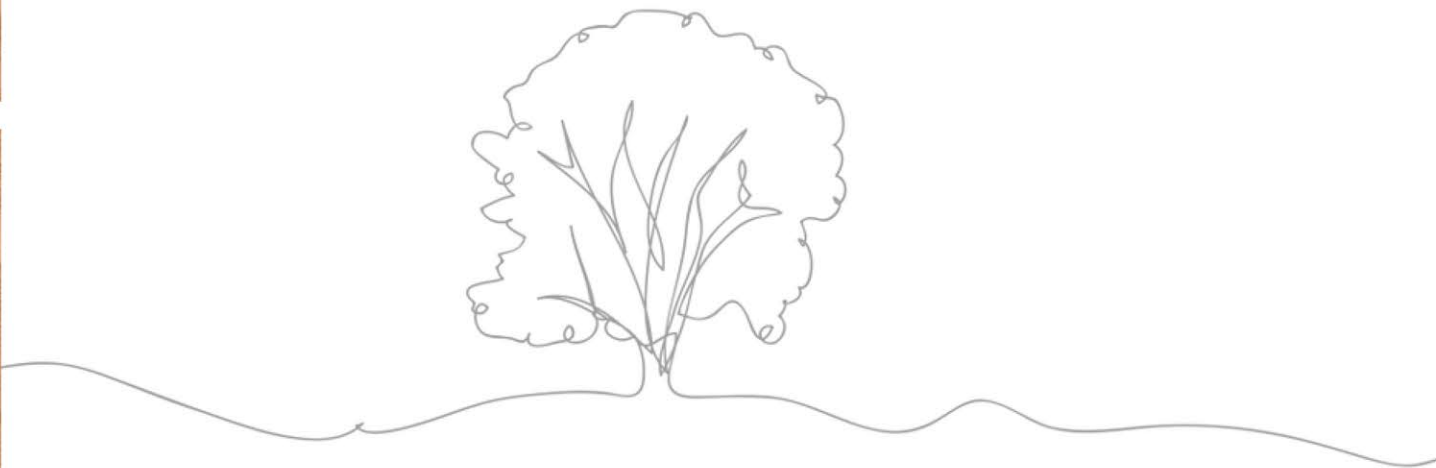
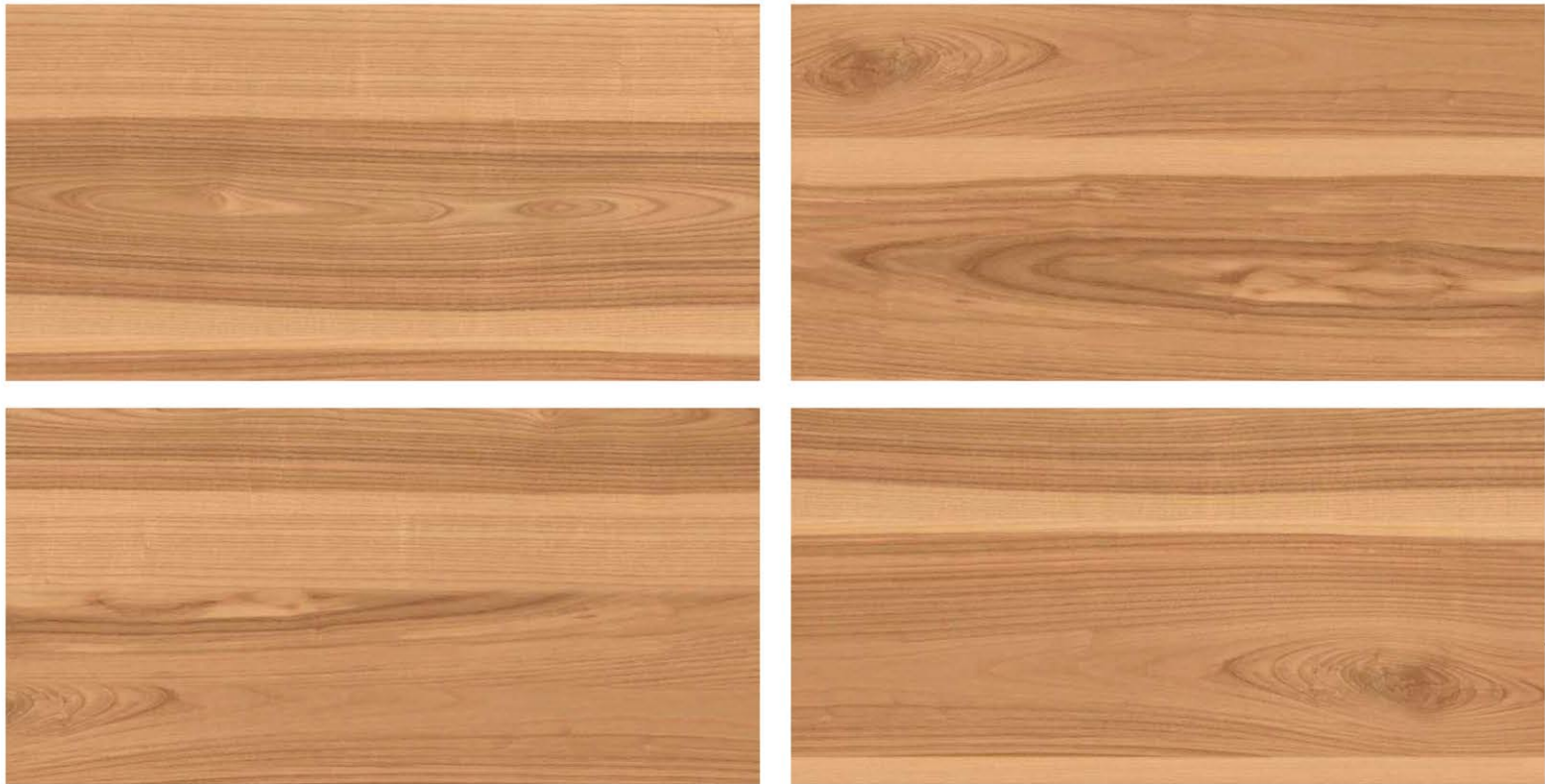
**TIMBERLAND**  
Carved in Excellence





CYPRESS  
BROWN

TIMBERLAND  
Carved in Excellence



 MATT SURFACE

FORMATS  
600X1200MM  
60X120CM  
24"X48"  
2'X4'

COMPOSITION 4PCS 

TECHNICAL CHARACTERISTICS :



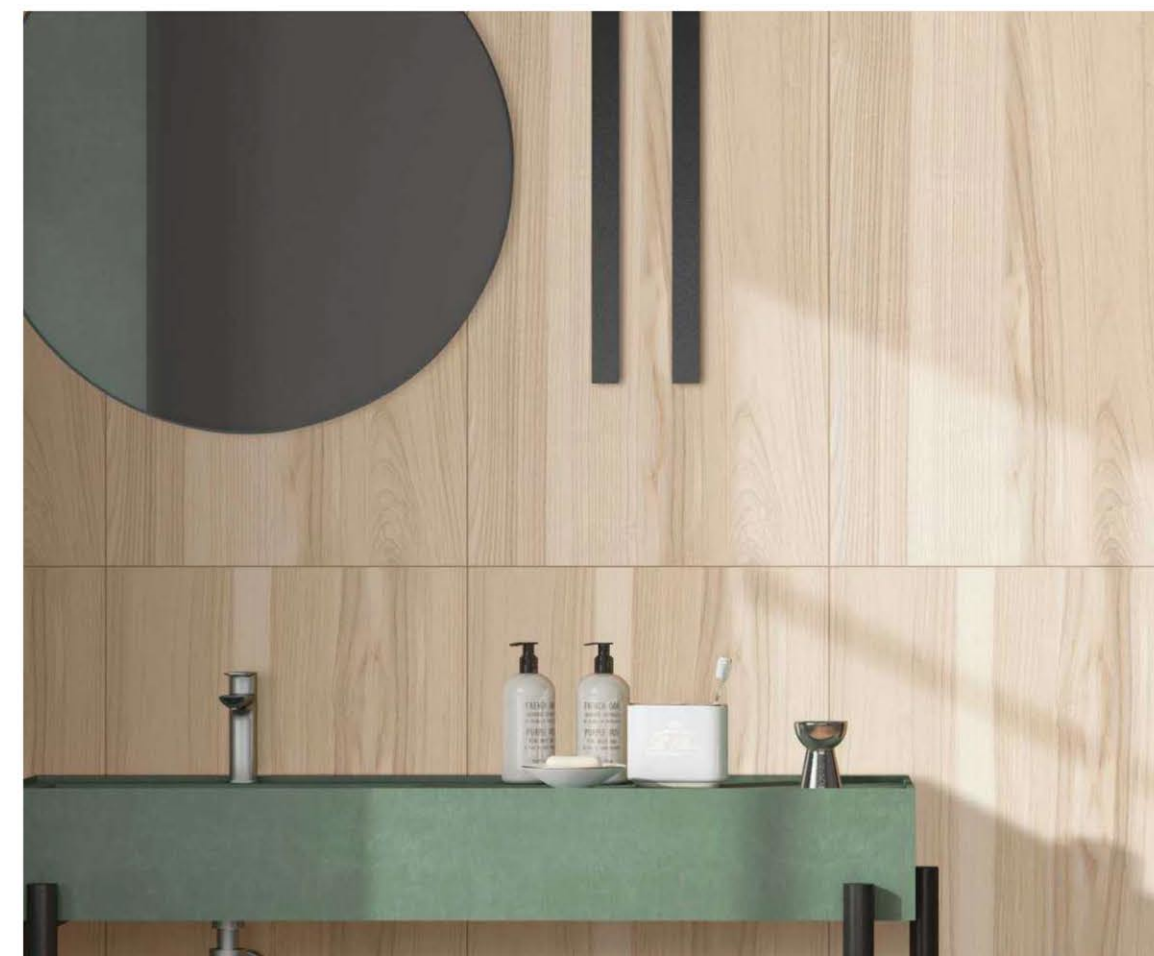




# CYPRESS

## CREMA

**TIMBERLAND**  
Carved in Excellence



 MATT SURFACE

FORMATS  
600X1200MM  
60X120CM  
24"X48"  
2'X4'

COMPOSITION 4PCS 

TECHNICAL CHARACTERISTICS :







Wall : Cypress Crema  
Floor : Cypress Crema

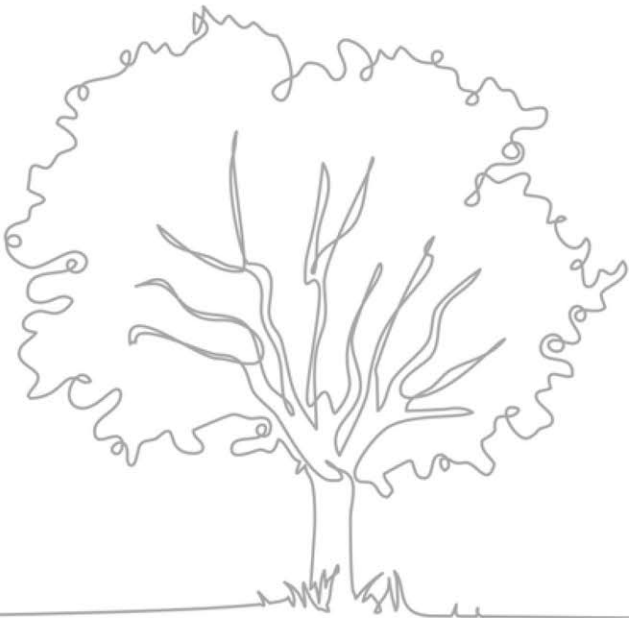
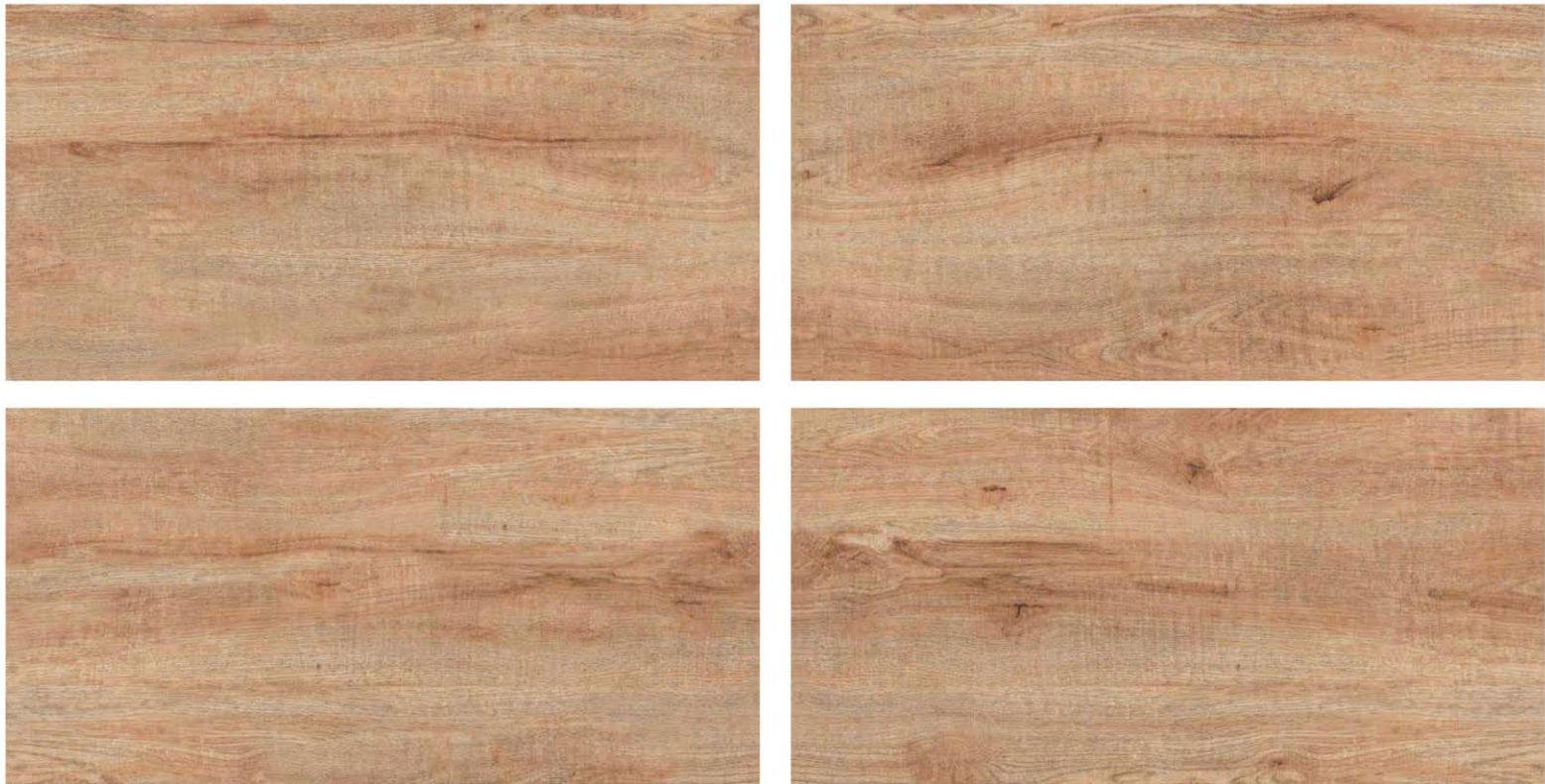
**TIMBERLAND**  
Carved in Excellence





DESIRAE  
BROWN

TIMBERLAND  
Carved in Excellence



MATT SURFACE

FORMATS  
600X1200MM  
60X120CM  
24"X48"  
2'X4'

COMPOSITION 4PCS



TECHNICAL CHARACTERISTICS :







# DESIRAE

## NATURAL

TIMBERLAND  
Carved in Excellence



 MATT SURFACE

FORMATS  
600X1200MM  
60X120CM  
24"X48"  
2'X4'

COMPOSITION 4PCS 

TECHNICAL CHARACTERISTICS :

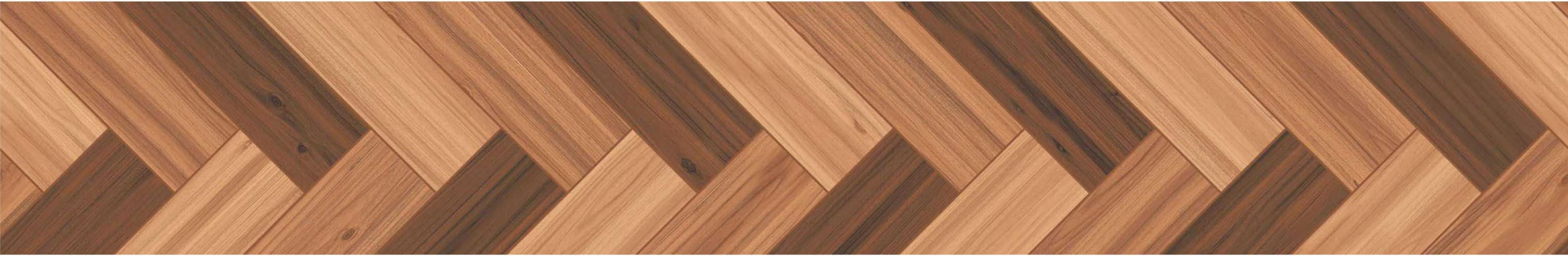




Wall : Desirae Natural  
Floor : Desirae Natural

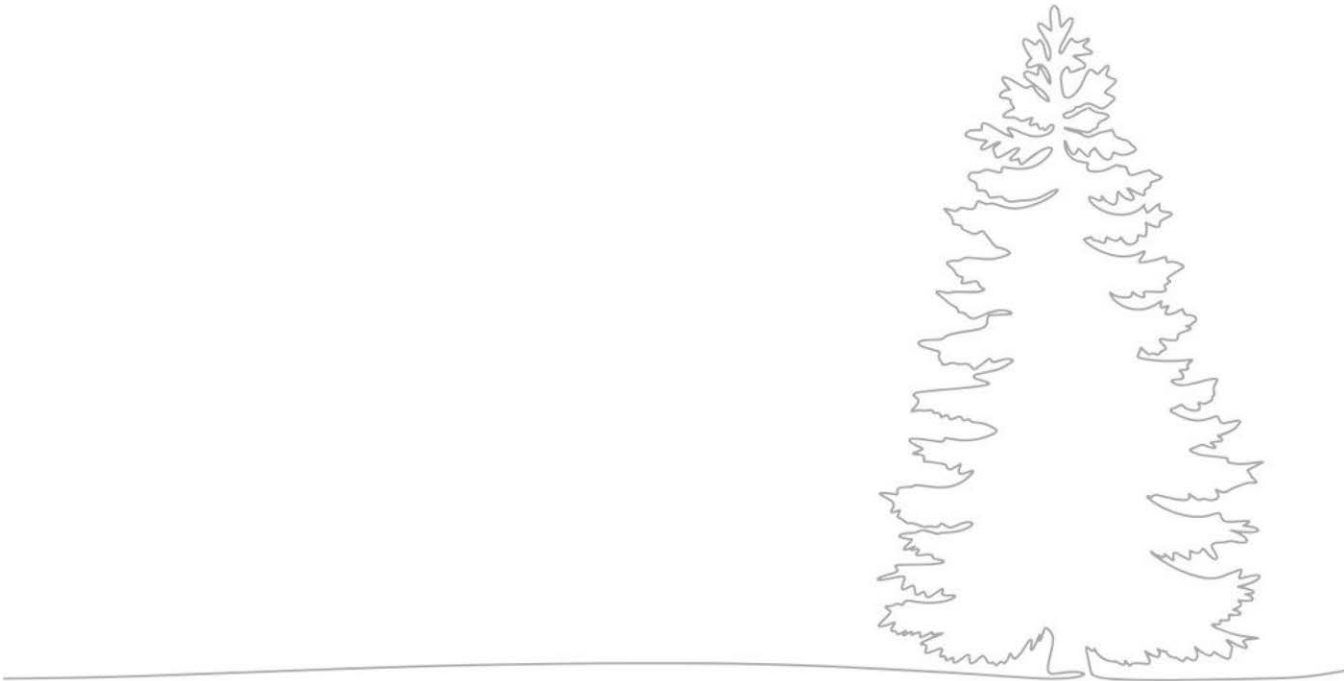
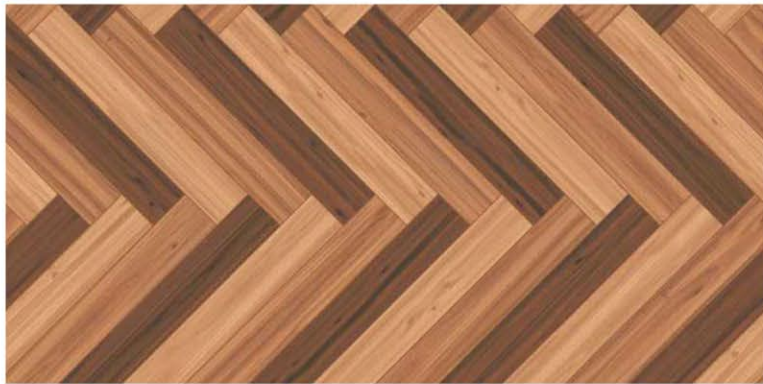
**TIMBERLAND**  
Carved in Excellence





EVRON MIX  
BROWN

TIMBERLAND  
Carved in Excellence



MATT SURFACE

FORMATS  
600X1200MM  
60X120CM  
24"X48"  
2'X4'

COMPOSITION 1PCS



TECHNICAL CHARACTERISTICS :







EVRON MIX  
UMBER

TIMBERLAND  
Carved in Excellence



MATT SURFACE

FORMATS  
600X1200MM  
60X120CM  
24"X48"  
2'X4'

COMPOSITION 1PCS

TECHNICAL CHARACTERISTICS :



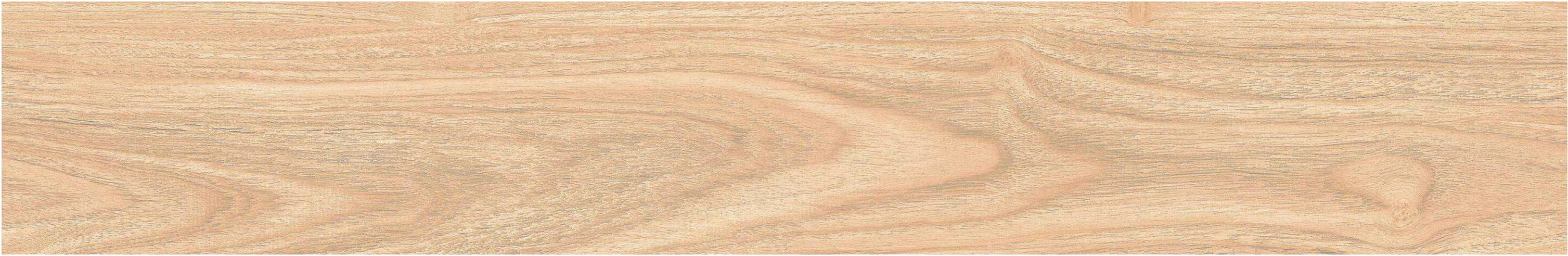




Wall : Evron Mix Umber  
Floor : Evron Mix Umber

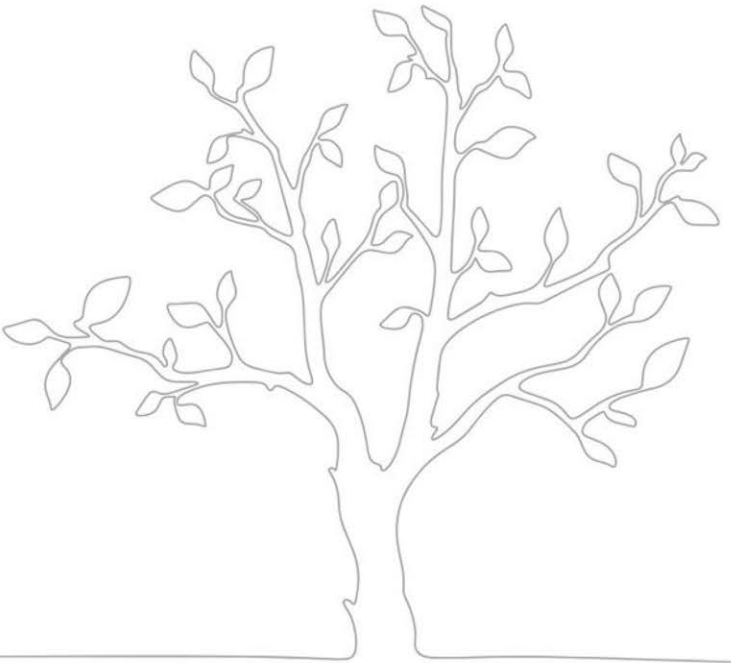
**TIMBERLAND**  
Carved in Excellence





FRONDA ARCE  
BEIGE

TIMBERLAND  
Carved in Excellence



 MATT SURFACE

FORMATS  
600X1200MM  
60X120CM  
24"X48"  
2'X4'

COMPOSITION 4PCS 

TECHNICAL CHARACTERISTICS :







# FRONDA ARCE

BROWN

TIMBERLAND  
Carved in Excellence



 MATT SURFACE

FORMATS  
600X1200MM  
60X120CM  
24"X48"  
2'X4'

COMPOSITION 4PCS 

TECHNICAL CHARACTERISTICS :







Wall : Fronda Arce Brown  
Floor : Fronda Arce Brown

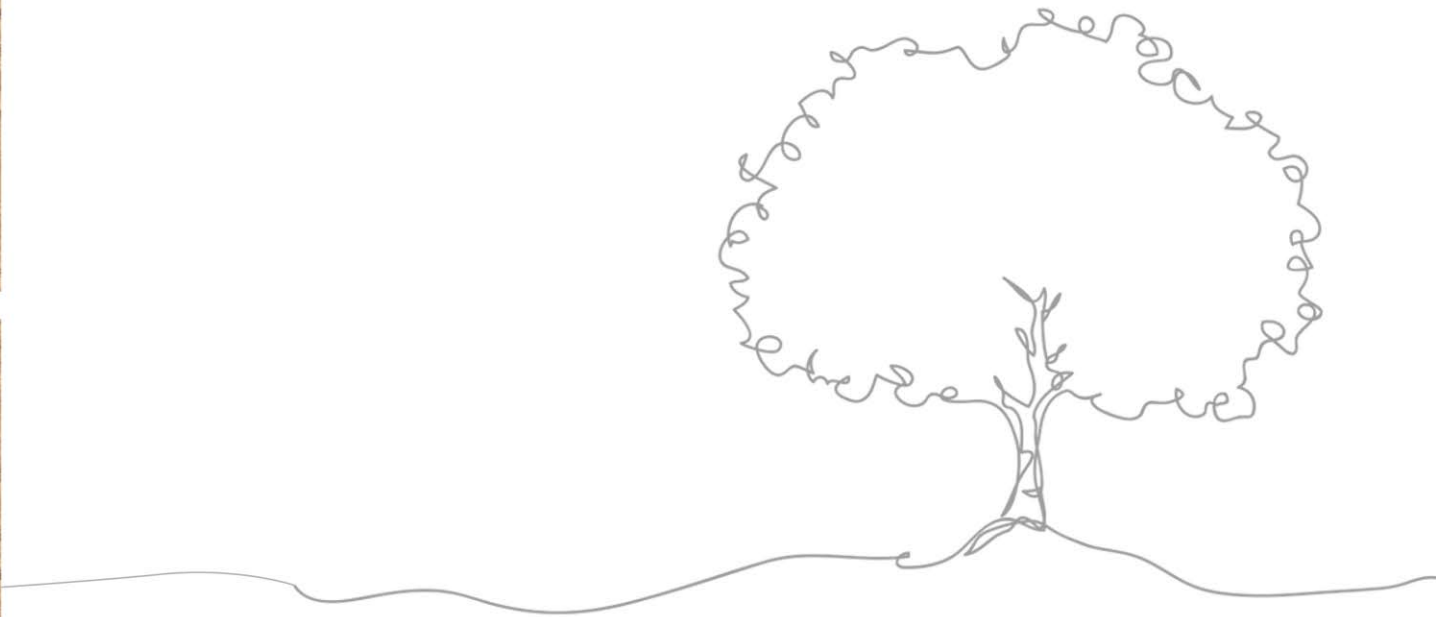
**TIMBERLAND**  
Carved in Excellence





FRONDA ARCE  
BEIGE

TIMBERLAND  
Carved in Excellence



MATT SURFACE

FORMATS  
600X1200MM  
60X120CM  
24"X48"  
2'X4'

COMPOSITION 4PCS







# LOGGER CREMA

TIMBERLAND  
Carved in Excellence



 MATT SURFACE

FORMATS  
600X1200MM  
60X120CM  
24"X48"  
2'X4'

COMPOSITION 4PCS 

TECHNICAL CHARACTERISTICS :







Wall : Logger Crema  
Floor : Logger Crema

**TIMBERLAND**  
Carved in Excellence





# MANGOLIA

## BEIGE

TIMBERLAND  
Carved in Excellence



 MATT SURFACE

FORMATS  
600X1200MM  
60X120CM  
24"X48"  
2'X4'

COMPOSITION 4PCS 

TECHNICAL CHARACTERISTICS :







# MANGOLIA

BROWN

TIMBERLAND  
Carved in Excellence



MATT SURFACE

FORMATS  
600X1200MM  
60X120CM  
24"X48"  
2'X4'

COMPOSITION 4PCS



TECHNICAL CHARACTERISTICS :

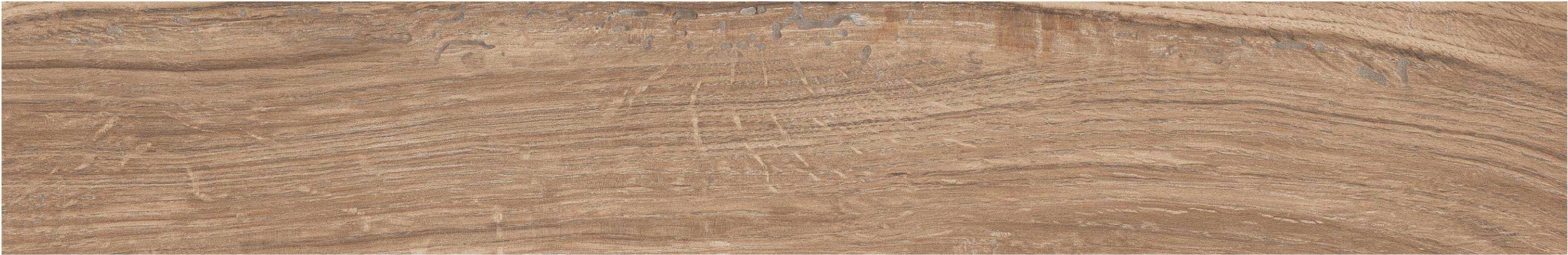




Wall : Mangolia Brown  
Floor : Mangolia Brown

**TIMBERLAND**  
Carved in Excellence





REAL WOOD  
BROWN

TIMBERLAND  
Carved in Excellence



MATT SURFACE

FORMATS  
600X1200MM  
60X120CM  
24"X48"  
2'X4'

COMPOSITION 4PCS



TECHNICAL CHARACTERISTICS :





# REAL WOOD

## NATURAL

TIMBERLAND  
Carved in Excellence



 MATT SURFACE

FORMATS  
600X1200MM  
60X120CM  
24"X48"  
2'X4'

COMPOSITION 4PCS 

TECHNICAL CHARACTERISTICS :







Wall : Real Wood Natural  
Floor : Real Wood Natural

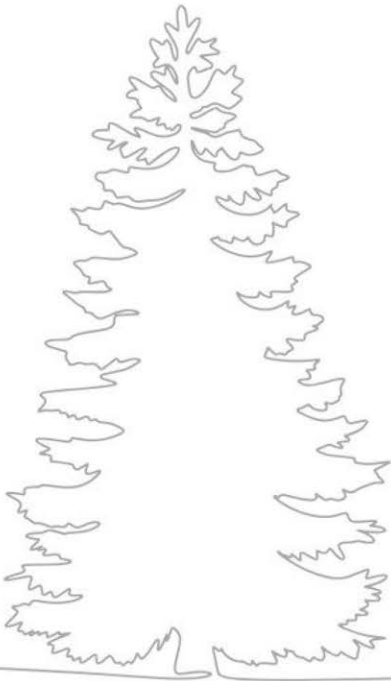
**TIMBERLAND**  
Carved in Excellence





ROYAL  
OAK

TIMBERLAND  
Carved in Excellence



 MATT SURFACE

FORMATS  
600X1200MM  
60X120CM  
24"X48"  
2'X4'

COMPOSITION 4PCS 

TECHNICAL CHARACTERISTICS :







# SEDAN

## OAK

TIMBERLAND  
Carved in Excellence



 MATT SURFACE

FORMATS  
600X1200MM  
60X120CM  
24"X48"  
2'X4'

COMPOSITION 4PCS 

TECHNICAL CHARACTERISTICS :







Wall : Sedan Oak  
Floor : Sedan Oak

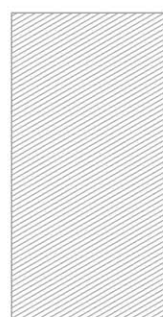
**TIMBERLAND**  
Carved in Excellence





# WORN WOOD

**TIMBERLAND**  
Carved in Excellence



 MATT SURFACE

FORMATS  
600X1200MM  
60X120CM  
24"X48"  
2'X4'

COMPOSITION 4PCS 

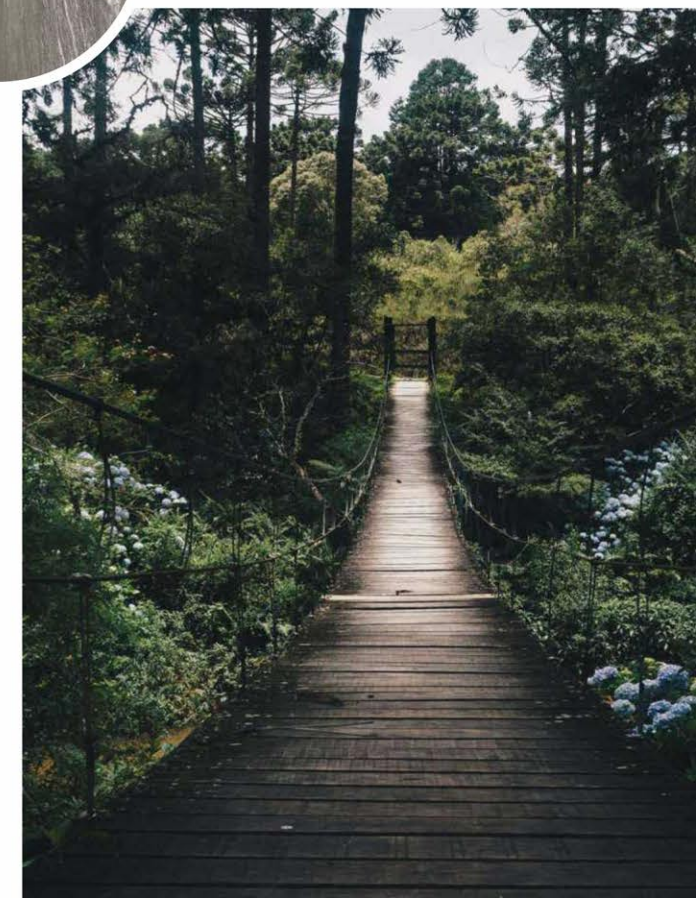
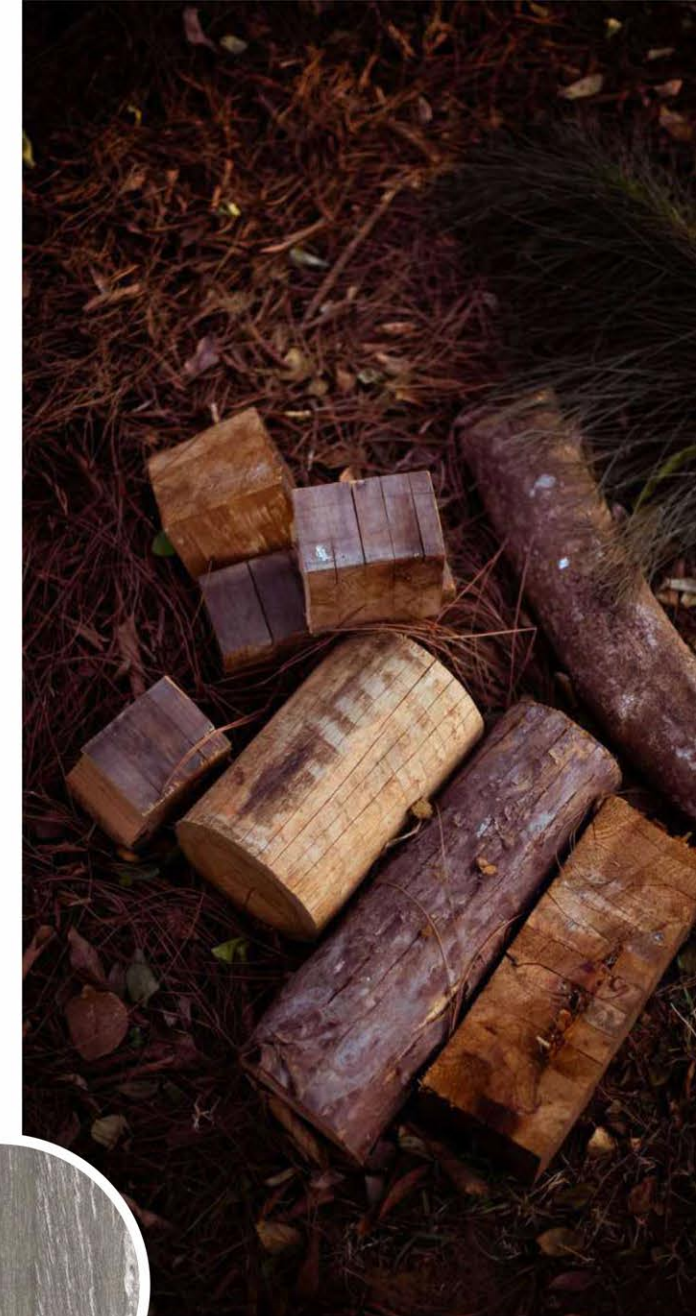
TECHNICAL CHARACTERISTICS :





# TIMBERLAND

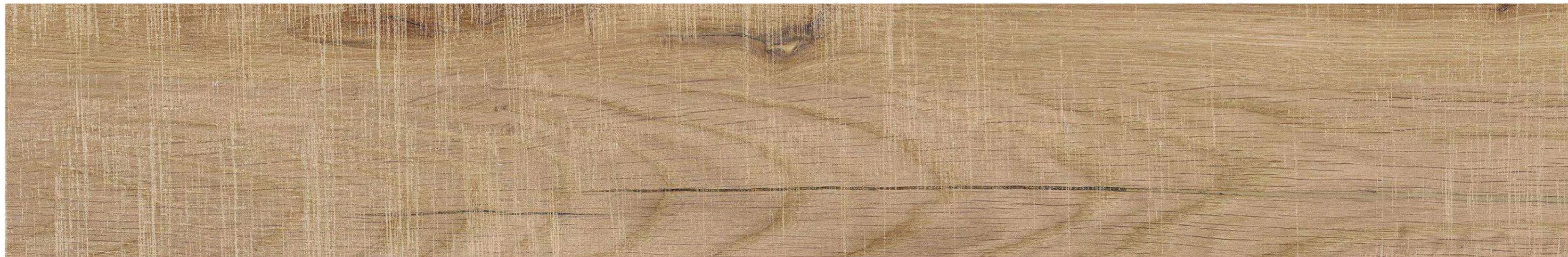
Carved in Excellence



## CARVING MATT SURFACE

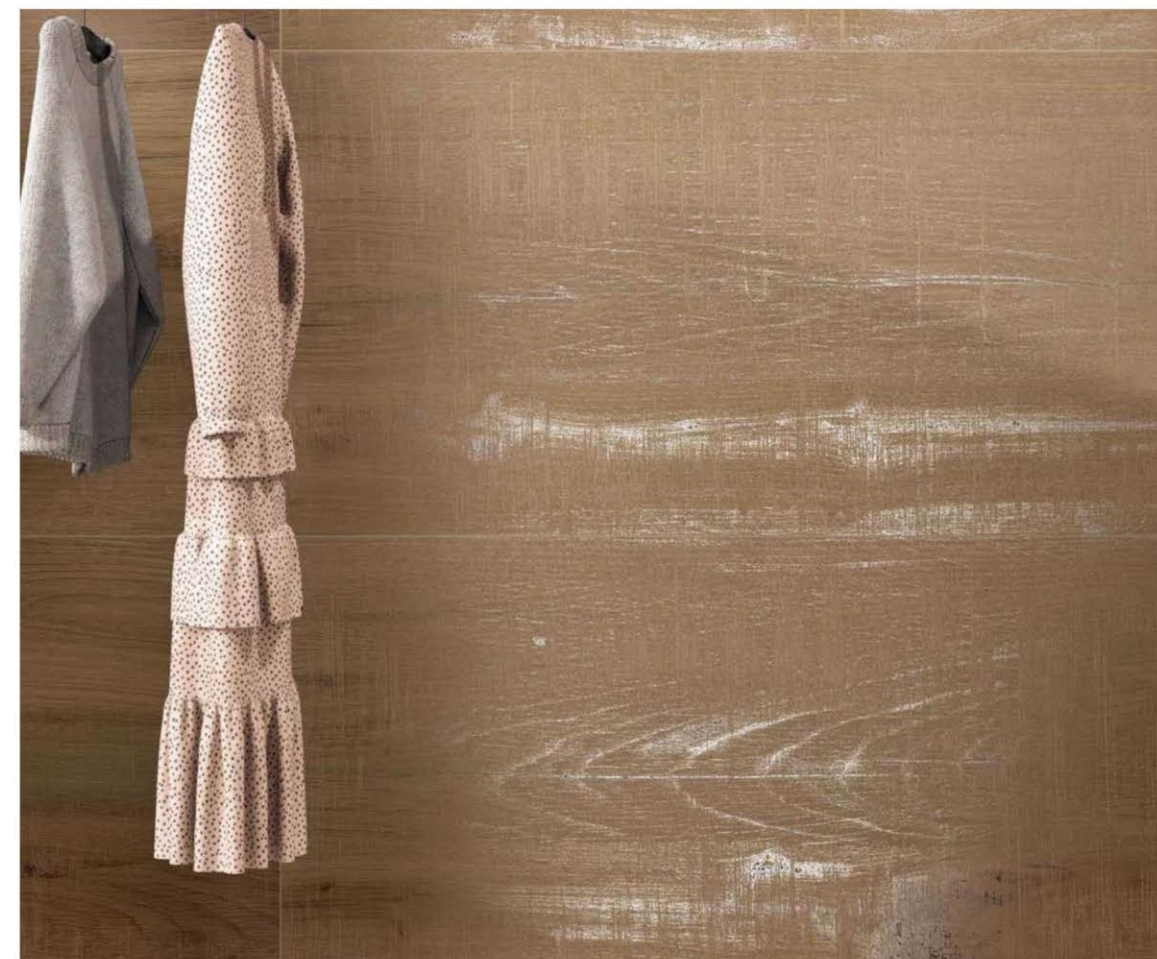
In the realm of craftsmanship, few techniques embody the rich heritage and timeless allure of wood carving. The art of sculpting intricate designs onto wooden surfaces transcends generations, evoking a sense of tradition, craftsmanship, and unparalleled beauty. In this exploration, we delve into the captivating world of wood carving surfaces, where skilled hands transform a simple piece of wood into a work of art.





# AMAZON WALNUT

TIMBERLAND  
Carved in Excellence



CARVING MATT SURFACE

FORMATS  
600X1200MM  
60X120CM  
24"X48"  
2'X4'

COMPOSITION 4PCS

TECHNICAL CHARACTERISTICS :







Wall : Amazon Walnut  
Floor : Amazon Walnut

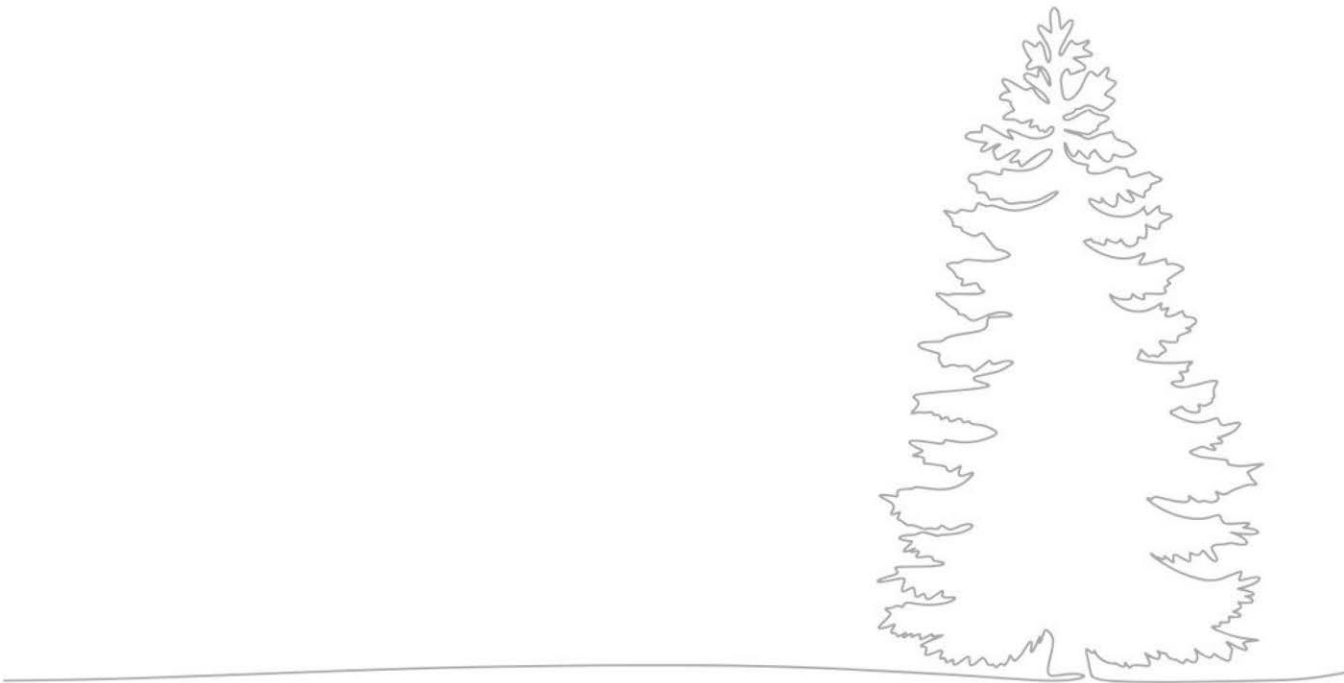
**TIMBERLAND**  
Carved in Excellence





ARDEN  
OAK

TIMBERLAND  
Carved in Excellence



 CARVING MATT SURFACE

FORMATS  
600X1200MM  
60X120CM  
24"X48"  
2'X4'

COMPOSITION 4PCS 

TECHNICAL CHARACTERISTICS :







## DACOTA BEIGE

TIMBERLAND  
Carved in Excellence



 CARVING MATT SURFACE

FORMATS  
600X1200MM  
60X120CM  
24"X48"  
2'X4'

COMPOSITION 4PCS 

TECHNICAL CHARACTERISTICS :







Wall : Dakota Beige  
Floor : Dakota Beige

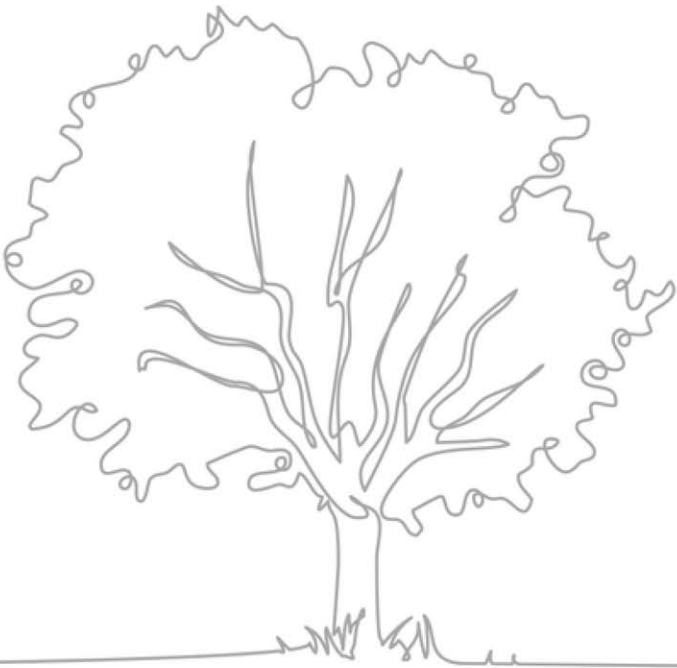
**TIMBERLAND**  
Carved in Excellence





BASS  
WOOD

TIMBERLAND  
Carved in Excellence



 CARVING MATT SURFACE

FORMATS  
600X1200MM  
60X120CM  
24"X48"  
2'X4'

COMPOSITION 4PCS 

TECHNICAL CHARACTERISTICS :

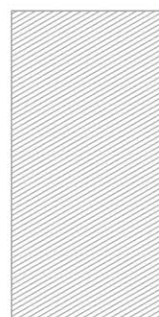






# HICKORY OAK

TIMBERLAND  
Carved in Excellence



 CARVING MATT SURFACE

COMPOSITION 4PCS 

FORMATS  
600X1200MM  
60X120CM  
24"X48"  
2'X4'

TECHNICAL CHARACTERISTICS :







Wall : Hickory Oak  
Floor : Hickory Oak

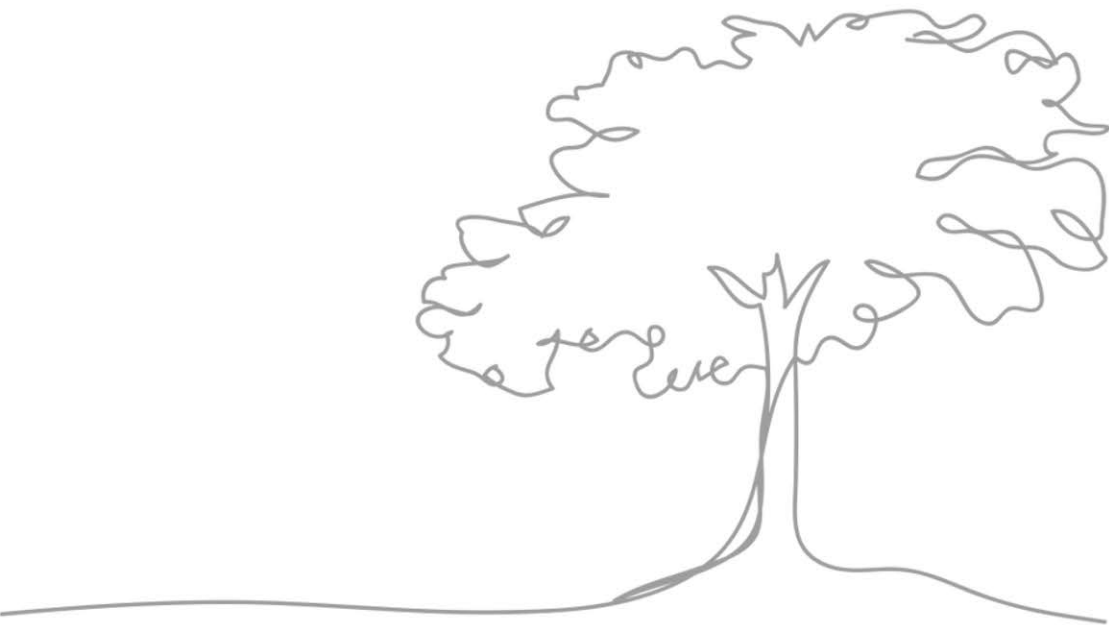
**TIMBERLAND**  
Carved in Excellence





FRENCH  
WOOD

TIMBERLAND  
Carved in Excellence



CARVING MATT SURFACE

FORMATS  
600X1200MM  
60X120CM  
24"X48"  
2'X4'

COMPOSITION 1PCS



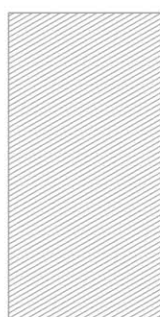
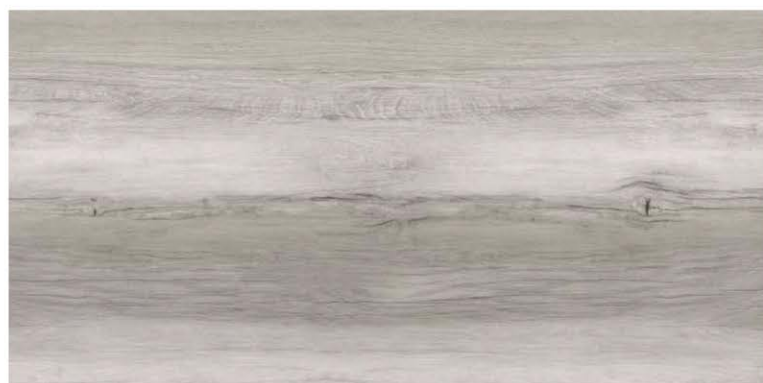




# HOBITET

## NATURAL

TIMBERLAND  
Carved in Excellence



CARVING MATT SURFACE

FORMATS  
600X1200MM  
60X120CM  
24"X48"  
2'X4'

COMPOSITION 4PCS



TECHNICAL CHARACTERISTICS :





Wall : Hobitet Natural  
Floor : Hobitet Natural

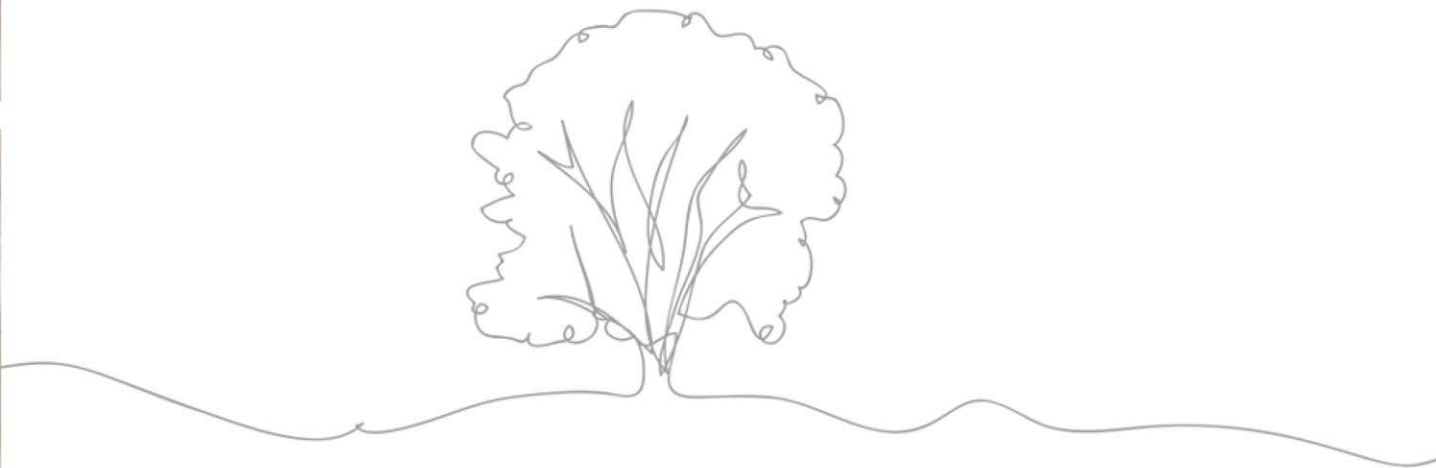
**TIMBERLAND**  
Carved in Excellence





**HOBITET**  
**CREMA**

**TIMBERLAND**  
Carved in Excellence



 CARVING MATT SURFACE

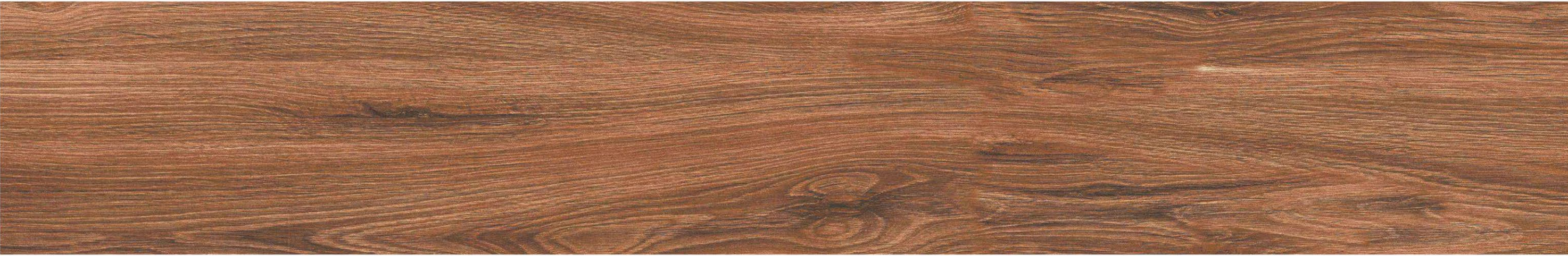
FORMATS  
600X1200MM  
60X120CM  
24"X48"  
2'X4'

COMPOSITION 4PCS 

TECHNICAL CHARACTERISTICS :







IROKO  
RED

TIMBERLAND  
Carved in Excellence



 CARVING MATT SURFACE

FORMATS  
600X1200MM  
60X120CM  
24"X48"  
2'X4'

COMPOSITION 4PCS 

TECHNICAL CHARACTERISTICS :



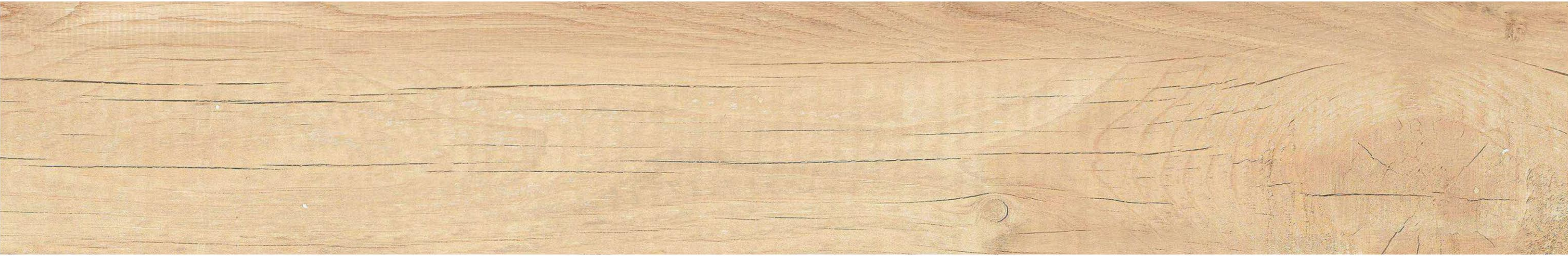




Wall : Iroko Red  
Floor : Iroko Red

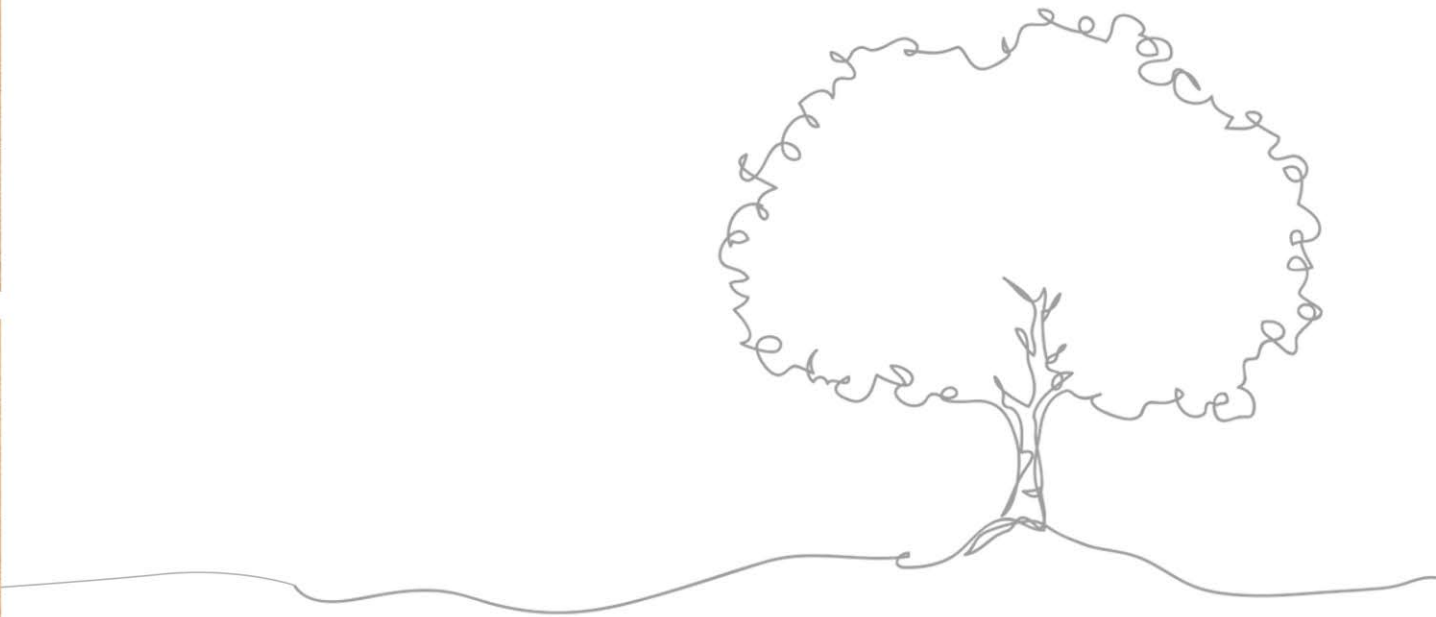
**TIMBERLAND**  
Carved in Excellence





LARCH WOOD  
BEIGE

TIMBERLAND  
Carved in Excellence



 CARVING MATT SURFACE

FORMATS  
600X1200MM  
60X120CM  
24"X48"  
2'X4'

COMPOSITION 4PCS 

TECHNICAL CHARACTERISTICS :







# LARCH WOOD

## BROWN

TIMBERLAND  
Carved in Excellence



 CARVING MATT SURFACE

FORMATS  
600X1200MM  
60X120CM  
24"X48"  
2'X4'

COMPOSITION 4PCS 

TECHNICAL CHARACTERISTICS :



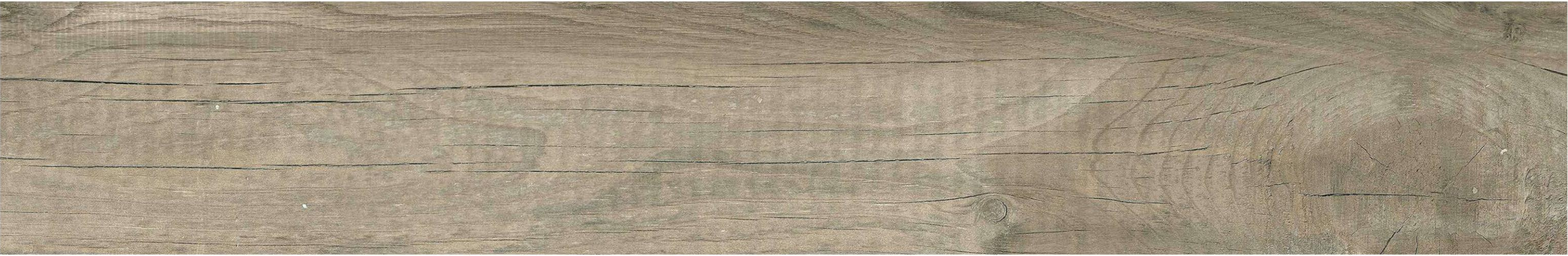




Wall : Larch Wood Brown  
Floor : Larch Wood Brown

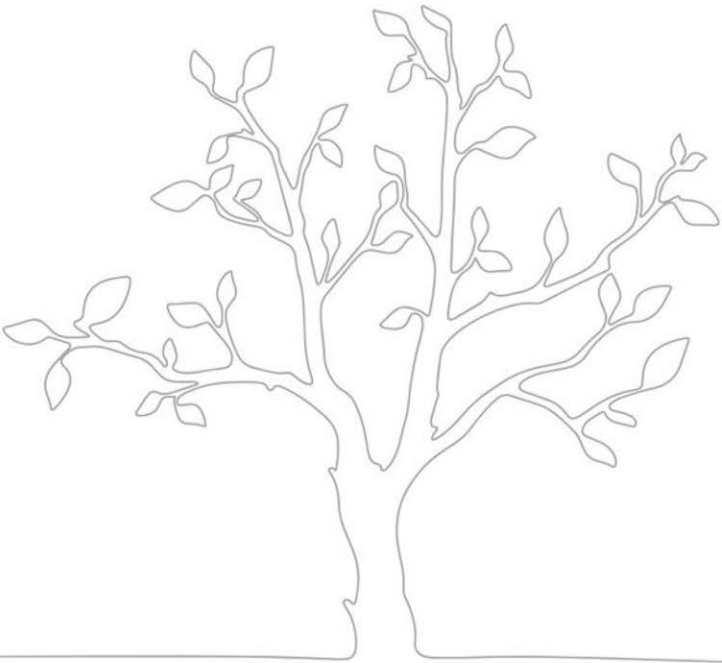
**TIMBERLAND**  
Carved in Excellence





LARCH WOOD  
GRIS

TIMBERLAND  
Carved in Excellence



 CARVING MATT SURFACE

FORMATS  
600X1200MM  
60X120CM  
24"X48"  
2'X4'

COMPOSITION 4PCS 

TECHNICAL CHARACTERISTICS :







# NAVORA

**TIMBERLAND**  
Carved in Excellence



 CARVING MATT SURFACE

COMPOSITION 4PCS 

FORMATS  
600X1200MM  
60X120CM  
24"X48"  
2'X4'

TECHNICAL CHARACTERISTICS :







Wall : Navora  
Floor : Navora

**TIMBERLAND**  
Carved in Excellence





OAK HARDWOOD  
BEIGE

TIMBERLAND  
Carved in Excellence



CARVING MATT SURFACE

FORMATS  
600X1200MM  
60X120CM  
24"X48"  
2'X4'

COMPOSITION 4PCS



TECHNICAL CHARACTERISTICS :

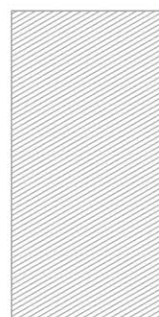






## OAK HARDWOOD BROWN

TIMBERLAND  
Carved in Excellence



CARVING MATT SURFACE

FORMATS  
600X1200MM  
60X120CM  
24"X48"  
2'X4'

COMPOSITION 4PCS



TECHNICAL CHARACTERISTICS :





Wall : Oak Hardwood Brown  
Floor : Oak Hardwood Brown

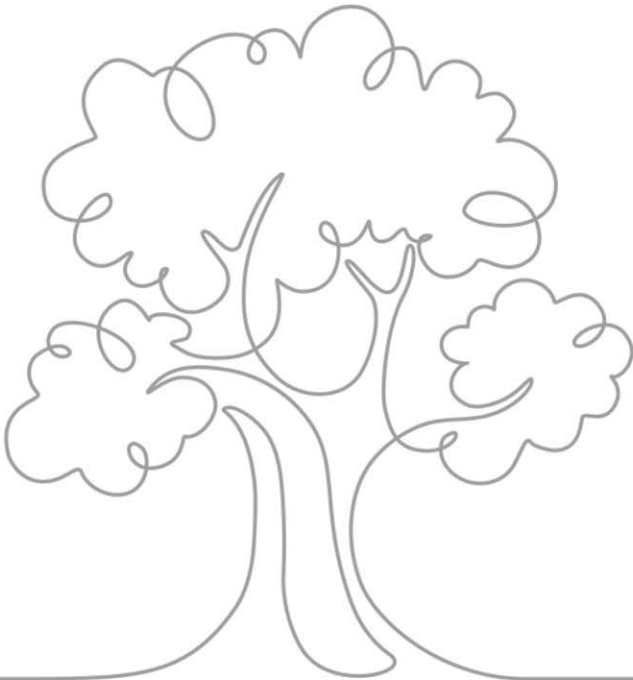
**TIMBERLAND**  
Carved in Excellence





OAK HARDWOOD  
NATURAL

TIMBERLAND  
Carved in Excellence



 CARVING MATT SURFACE

FORMATS  
600X1200MM  
60X120CM  
24"X48"  
2'X4'

COMPOSITION 4PCS 

TECHNICAL CHARACTERISTICS :







# PINE WOOD

## BROWN

**TIMBERLAND**  
Carved in Excellence



 CARVING MATT SURFACE

COMPOSITION 4PCS 

FORMATS  
600X1200MM  
60X120CM  
24"X48"  
2'X4'

TECHNICAL CHARACTERISTICS :



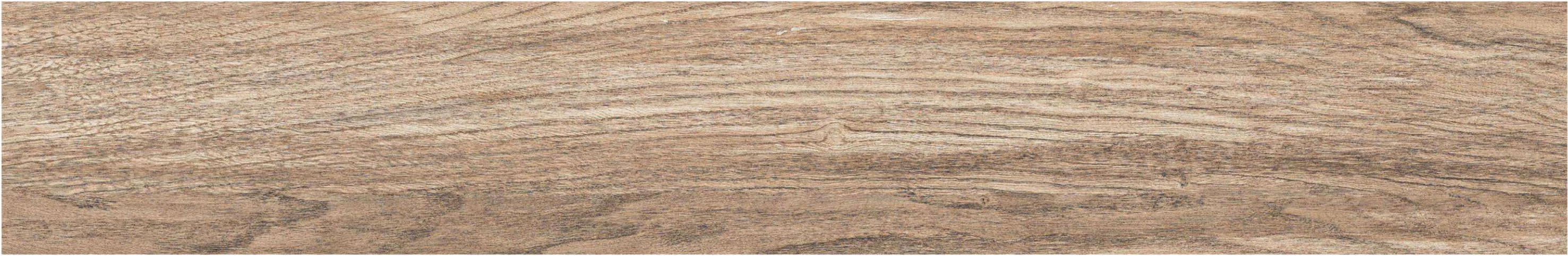




Wall : Pine Wood Brown  
Floor : Pine Wood Brown

**TIMBERLAND**  
Carved in Excellence





PINE WOOD  
CREMA

TIMBERLAND  
Carved in Excellence



 CARVING MATT SURFACE

FORMATS  
600X1200MM  
60X120CM  
24"X48"  
2'X4'

COMPOSITION 4PCS 

TECHNICAL CHARACTERISTICS :







# RUST OAK

**TIMBERLAND**  
Carved in Excellence



 CARVING MATT SURFACE

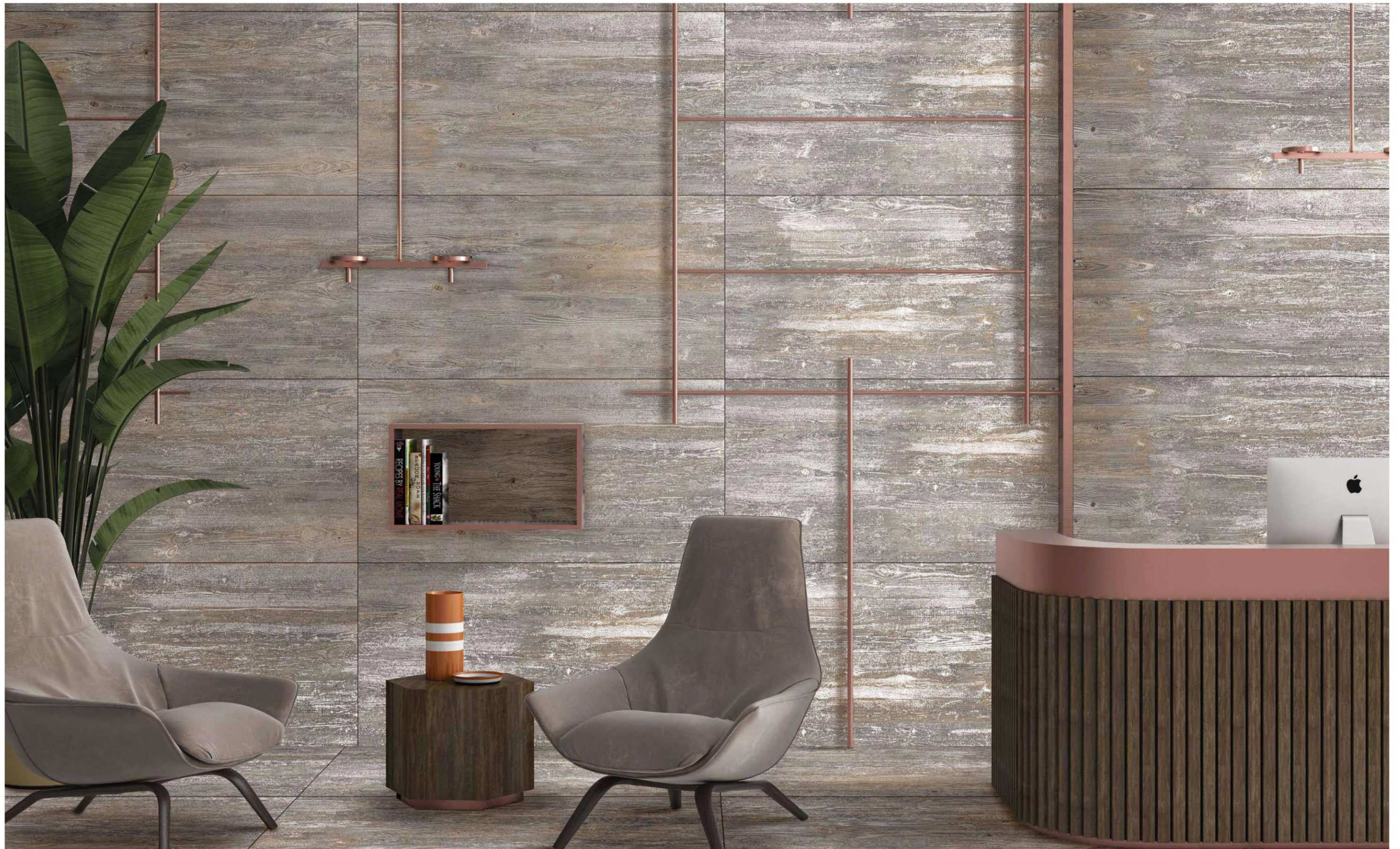
FORMATS  
600X1200MM  
60X120CM  
24"X48"  
2'X4'

COMPOSITION 4PCS 

TECHNICAL CHARACTERISTICS :







Wall : Rust Oak  
Floor : Rust Oak

**TIMBERLAND**  
Carved in Excellence





SONOMA  
OAK

TIMBERLAND  
Carved in Excellence



 CARVING MATT SURFACE

FORMATS  
600X1200MM  
60X120CM  
24"X48"  
2'X4'

COMPOSITION 4PCS 

TECHNICAL CHARACTERISTICS :

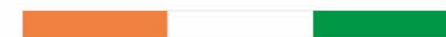






REPRESENTATIVE OF  
UNMISTAKABLE  
INDIAN AUTHENTICITY  
AND STYLE

MADE IN INDIA



Made in India isn't just style, design and excellence, it's a way of being. We identify with the values expressed by Indian ceramic tradition ethical code, which guarantee absolute compliance with labor regulations, and with the marks Made in India and which certify the quality of authentic Italian style.



# WE CARE FOR NATURE



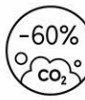

## ENERGY OPTIMIZATION

-  Efficient methane gas cogeneration plant
-  Heat recovery from furnaces and cooling water
-  CHP vapour recovery with 40% savings in methane gas
-  100% LED lighting, 50% annual power savings

## WASTE MANAGEMENT

-  100% recycled raw and cooked waste
-  99% waste sent to recovery
-  100% recycled industrial water and 27% reduction in water consumption over the last 3 years
-  100% recyclable packaging materials

## ENVIRONMENTAL HEALTH

-  Continuously operating purification and filtration systems
-  RTO system to reduce harmful emissions and odours
-  Automated Vertical Warehouse: 60% reduction in CO<sub>2</sub>
-  0% lead, cadmium, and other carcinogenic substances in products





# CLEANING & MAINTAINANCE

## 1. CLEANING AFTER INSTALLATION

FOR REMOVING THE FOLLOWING RESIDUICE	TYPE OF DETERGENT	DETERGENT NAMES
cement base grout grout lime	buffered acid based	keranet
		cement remover
		deterdek pro
		hmk r63
		solvacid

## 2. EXTRAORDINARY CLEANING

FOR REMOVING THE FOLLOWING RESIDUICE	TYPE OF DETERGENT	DETERGENT NAMES
grease dust footmarks base cleaning	multipurpose alkaline-based (1)	ps87 pro
		intensivreiniger
		hmk r55
coffee coke fruit juice	multipurpose alkaline-based (1)	coloured stain remover
		super deterjet
wine	oxidizing agent	oxidant candeggina
calcareous deposits	acid-based (1)	viakal
rust	acid-based (1)	acido muriatico diluito
inks felt-tipped pen	solvent-based	diluyente nitro, acqua ragia
		coloured stain remover
pneumatic stains from rubber metals or pencils	abrasive paste (1)	vim clorex (2)
		polishing cream (2)
		detergum (3)
tile joint stains	specific	fuganet
		fugenreiniger
clean on a daily basis	neutral universal degreaser	floor cleaner
		cleaner pro
		pflęgereiniger
		bonamain + / bmain +  smac expresse sgrassatore

# SPECIAL MAINTENANCE

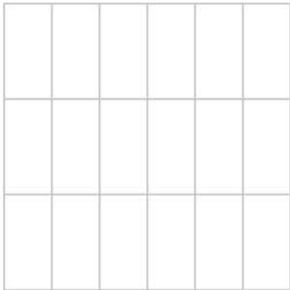
## REMOVING GLOSSY GLAZE

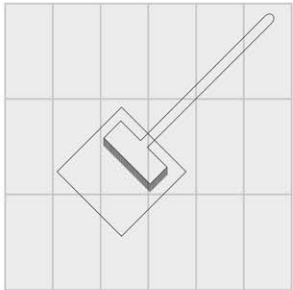
Standard detergents that are available in the market sometimes contain waxes or polish additives that, wash after wash, deposit **glossy glaze** on the floor and causes annoying marks. These types of glazes can also settle on some joint grouts. When simply types of foods such as Coke, wine, water, etc., fall on the floor, they remove this type of glossy glaze and restore the **original appearance** of the tiles (a more opaque look). In the middle of the shinier floor, the areas without wax appear as opaque marks, but they are actually the only clean parts of the floor. In these cases, the following must be done:  
**1.** First of all, remove the glossy glaze from the entire floor (see table below);  
**2.** Then, for daily cleaning, use neutral detergents that do not contain wax or polishing glaze

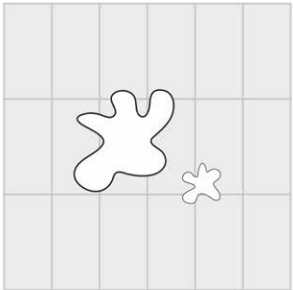
**NEVER USE:** Waxing and impregnating agents - Acid or alkaline detergents - Abrasive pastes - Abrasive brushes or sponges.

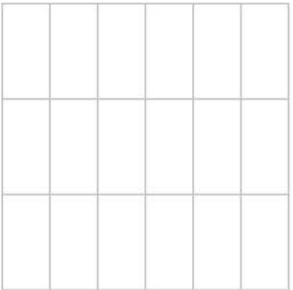
RESIDUES TO BE REMOVED	TYPE OF DETERGENT	DETERGENT NAMES
glossy glaze	weak acidulous	tile cleaner pure (*)

(\*) Do not follow the instructions on the package, just apply the pure detergent, leave it on for 5-10 minutes, rub it with soft pads (white, yellow) and rinse it thoroughly with water.

1.  
  
Original Floor

2.  
  
After cleaning detergents containing waxes.

2.  
  
Simple foodstuffs (Coca-Cola, wine, water etc) can remove the bright patina. The original surface is more matt.

2.  
  
Remove the patina with detergent (Faber tile cleaner, used neat), and use detergent without waxes for everyday cleaning.

### CLEANING “AFTER THE INSTALLATION”

- Cleaning “after the installation” helps remove residues of grout-joints, cement and lime. This is obligatory at the end of the installation, for glazed tiles and unglazed tiles.
- If the cleaning “after the installation” is not carried out properly or if is not carried out at all, is often a cause of marks that prevent the floor from being clean even if a good daily cleaning is performed.
- Whenever is possible, especially for medium to large surfaces, it is advisable to use a single-brush machine with soft disks (white or beige).
- cleaning cement-based grouts mixed with water.  
It is carried out with specific detergents based with buffered and diluted acids. The table below shows some of these detergents, which are easily available in the market.

### INSTRUCTIONS ON HOW TO CLEAN “AFTER THE INSTALLATION”

- Clean 4-5 days after the grouting (the grout must be hardened); do not wait over 10 days. In addition to this period, the cleaning can become very laborious.
- Moisten the floor with water before cleaning. This way the groutings are soaked with water and the contact with detergents is reduced.
- Let the detergents operate for limited periods, hence rinse out with water as soon as possible.
- It must not be carried out if the tiled surfaces are very hot (i.e. exposed to the sun during very warm days); this must be avoided as the action of aggressive chemicals become very harsh.On the summer, proceed with the operation during the coolest period of the day.
- Make sure to always perform a precautionary test before using the product (on a tile that is not laid), especially for Lapped or Polished products.
- cleaning for epoxy, bi-component and reagent grouts In these cases the removal must be carried out immediately and carefully following the recommendations of the manufacturers, as these grout harden very fastly, even in a few minutes. Please carefully follow the cleaning mode specified by the manufacturer of the grout used; verify its effectiveness (backlight also) with a preliminary cleaning test before grouting the entire floor/wall.
- “Antislip” tiles that are made with rough and/or textured surfaces must be cleaned very laboriously. Therefore, it is advisable to clean “after the installation”, quickly and thoroughly, using a single-brush machine with disks white and beige.





# LAYING INSTRUCTION

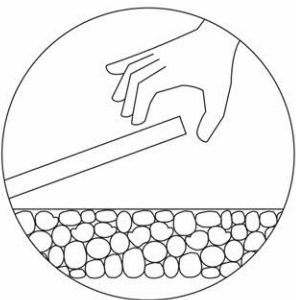


## DRY LAYING ON GRASS

In the case of a grass surface, the paving should be laid dry without the use of adhesives. This installation technique is simple, ecological, and can be carried out without specialised personnel. This technique is ideal for rapid creation of elegant paths in public parks and private gardens.

## LAYING ON GARVEL

The different installation methods make it possible to create complex spaces while ensuring visual uniformity even when working on diverse substrates. In the presence of a gravel substrate, the floor surface can be installed simply by placement of the tiles without the use of adhesives. This method streamlines the levelling procedure and also guarantees excellent stability. The solution allows the creation of decorative effects using gravel and pebbles of different particle sizes and colours.

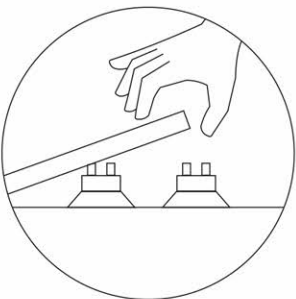


## LAYING ON SCREED WITH ADHESIVE

The technical characteristics of the glazed vitrified tiles are perfectly compatible also with sandy substrates. This makes the system especially suitable for public areas in the proximity of beaches and in beach bars. Resistant to the action of solar UV radiation and prolonged contact with salt. Impervious to wear caused by sand abrasion. In addition, the R11 A+B+C surface is an advantage for the safety of holiday makers. Installed completely dry, the tiles are the ideal practical and robust solution for seasonal businesses requiring periodic setup and removal operations, such as kiosks or temporary structures in general installed on beaches.

## LAYING ON RAISED FLOOR

The Saans' 9mm glazed vitrified tiles are composed of pedestals to raise the floor surface with respect to the base level, resulting in the creation of an underfloor void that can be used to route electrical cables and pipework easily. This allows inspection of technical systems at any time and simple replacement of components if necessary. The system is assembled without adhesives. Dry assembly of the structure is extremely effective in applications where correct drainage is important.







**LiveStone**  
CERAMIC

**LIVESTONE CERAMIC PVT LTD**

Survey No.394 P3/P1, B/H-Livecity Ceramic,  
Nr. Rangpar, Jetpar Road, Dist. Morbi 363642 (Gujarat) INDIA

**E-mail**

info@limestoneceramic.com  
export@limestoneceramic.com

**Website**

www.limestoneceramic.com

**Customer Care**

+91 99786 03232

**Follow Us**

